

Medication

- Bupivacaine
 0.125% 0.25%
 0.5% Other _____
- Ropivacaine
 0.2% Other _____
- Other

Approximate Date Infusion Complete

For All Medical Questions Call

Surgeon Contact Information



beeline motIV

 **COSUDA**

www.cosuda.com

Sydney, Australia

Patient Guidelines

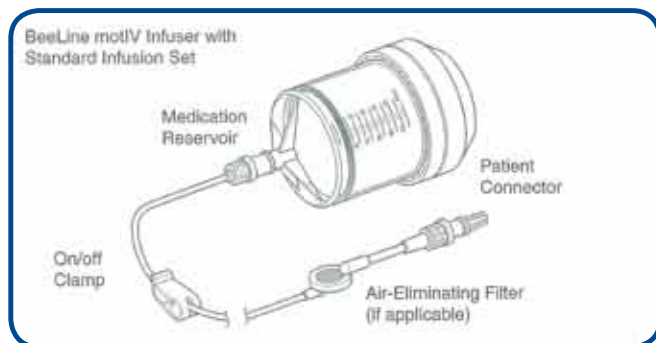
beeline motIV



Patient Quick Reference Card

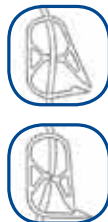
Keep this card in a handy location. For complete guidance, refer to the instructions given to you by your health care provider.

Product Overview



Starting & Stopping Delivery

- To start delivery, open the on/off clamp on the tubing attached to the beeLINE motIV infuser.
- To stop delivery, close the on/off clamp on the tubing attached to the beeLINE motIV infuser.



When to start/stop deliver:

For Daily Use

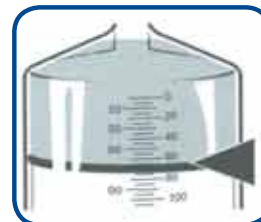
- Do not use a microwave, oven, or water bath to warm the contents of the beeLINE infuser.
- Do not immerse the beeLINE infuser in water or other fluids. While showering, keep the infuser outside of the shower or place it in a waterproof bag.
- To protect the beeLINE infuser from damage during daily activities, use the specially designed protective carrying pouch at all times.

- During medication delivery, check for the following:

- The beeLINE infuser is emptying
- There is no leakage from the beeLINE infusion system
- There is no air in the beeLINE infusion system
- The tubing is not kinked
- All connections are secure
- You are not experiencing side effects, which may include but are not limited to:
 - Increased pain
 - Redness, swelling or discharge at the catheter or incision site
 - Skin rash or hives
 - Metallic taste in patient's mouth
 - Light-headed or dizzy feeling
 - Excitation or restlessness
 - Excessive drowsiness

IMPORTANT: if you notice any problems, contact your health care provider immediately.

- To monitor the infusion progress, open the carrying pouch from time to time and read the position of the dark ring against the graduation scale on the beeLINE Medicine Reservoir.



Cleaning & Care

- If desired, the beeLINE infuser may be cleaned using a cloth dampened with water. To avoid damaging the infuser, do not use any cleaning agents.
- Take care to prevent entry of any foreign substances inside the beeLINE Infuser.

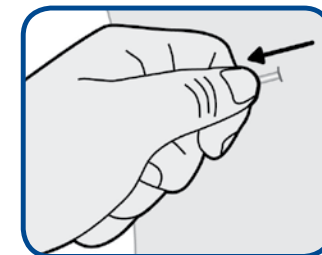
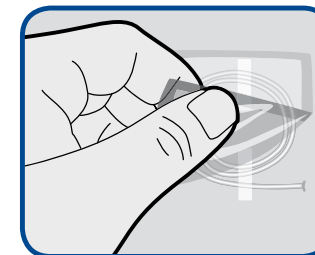
Storage

- The beeLINE Infuser should be stored in a clean, dry environment. Avoid prolonged exposure to extreme temperatures about 104°F (40°C) or below 32°F (0°C).
- For proper storage of medicines, refer to the instructions given to you by your health care provider.

REMOVAL OF CATHETER

If your doctor has instructed you to remove the catheter, then **follow their instructions** keeping in mind these key steps:*

- Remove the dressing covering the catheter site.
- Grasp the catheter close to the skin and **gently** pull on the catheter. It should be easy to remove and not painful. Do not tug or quickly pull on the catheter during removal. If it becomes hard to remove or stretches, then **STOP**. Call your doctor. Continued pulling could break the catheter.



- Do not cut or pull hard to remove the catheter.**
- After you remove the catheter, check the catheter tip for the black marking to ensure the entire catheter was removed. Call your doctor if you don't see the black marking.



- Place a bandage over the catheter site as instructed by your doctor.
- * Repeat these steps for other catheter site if you have more than one catheter.

CALL YOUR DOCTOR IF YOU HAVE:

- Redness, warmth or excessive bleeding from the catheter site.
- Pain, swelling or a large bruise around the catheter site.